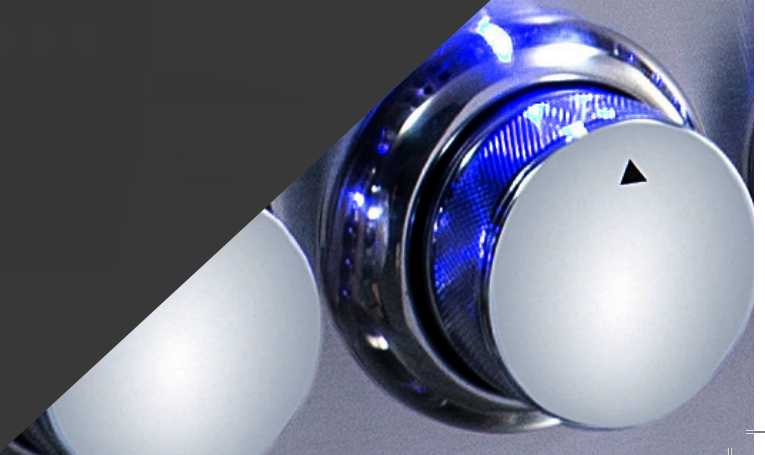




Grills & Ventilation

Sophisticated Style • High Performance Cooking





GAS Barbecue Grills

Heat Professional Gas Grills deliver high performance and chef-inspired features at a fantastic value! Powerful cast stainless steel burners are paired with our unique Diamond V flame stabilizers and cooking grids. This design delivers the intense, even heat needed to achieve perfect results across the spacious grilling surface. Crafted from commercial grade 304 stainless steel, its professional grade construction creates an optimal cooking environment and provides long-lasting durability and performance. In fact, it's built so well, we offer a **lifetime warranty***.

- 4 or 5 professional quality 304 cast stainless steel burners
- 14,000 BTUs per burner for 56,000 or 70,000 BTUs of cooking power
- 12,000 BTU infrared rotisserie burner
- Patented stabilizers
- Heavy duty Diamond V™ cooking grids designed for high temperature cooking
- Removable stainless steel warming rack
- Full-width drip tray that's easy to clean
- Double-lined grill hood maintains heat and prevents exterior discoloration
- Reliable push n' turn flame thrower primary ignition system
- Flash tube and crossover alternate ignition
- Unique blue LED control panel lighting for evening cooking
- Natural gas and LP options
- Optional custom fit grill carts are available

Features

HEAT Delivery System

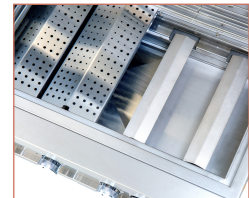
Stainless Steel Professional Style Double Walled Hood provides excellent heat retention, is cool to the touch, and counter balanced for easy lifting.



Diamond V™ Cooking Grid offers reversible cooking to infuse meats and vegetables and grills to perfection everytime. The Diamond shape produces high temperatures, superior cooking and easy cleaning.



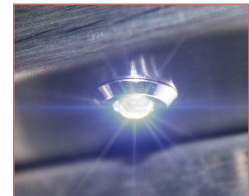
16 Gauge Flame Tamer System delivers even cooking, reliable, easy cleaning, high temperatures with reduced Flare ups and a lifetime warranty



Cast Stainless Steel Burners delivers up to 750° surface temperatures with up to 70,000 BTUs of cooking power.



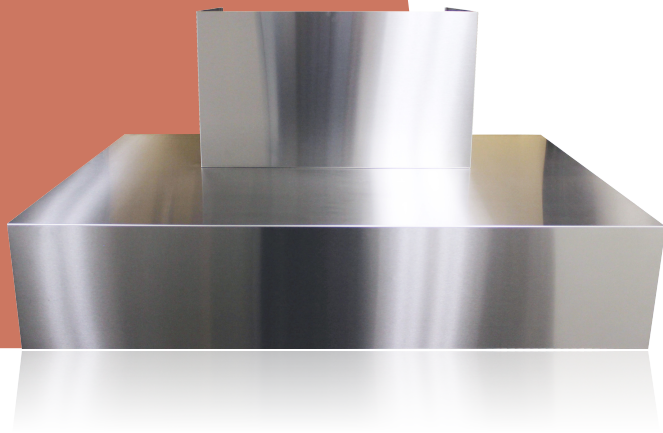
HEAT Cool Blue Lighting illuminates the control panel and knobs with CBL cool blue LEDs, and the 110 volt provides reliable operation.



Push N' Turn Flame Thrower Control Knobs reliable with simple push and turn to light, control valves provide a variable heat setting for individual burners.



Model	Description	Dimensions
HTGR32-4-XX	32" 4-Burner Gas Grill with Rear Infrared Burner - Natural Gas/ Liquid Propane	21"H x 25.625"L x 32.375"W
HTX-32-CART	Grill Cart for 32" 4-Burner Gas Grill	35.5"H x 22.13"L x 56.25"W
HTGR40-5-XX	40" 5-Burner Gas Grill with Rear Infrared Burner - Natural Gas/ Liquid Propane	21"H x 42"L x 40.375"W
HTX-40-CART	Grill Cart for 40" 5-Burner Gas Grill	35.5"H x 22"L x 63.38"W



Hoods

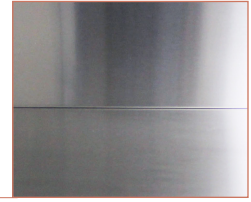
Effective outdoor ventilation is vital in maintaining a safe cooking and dining environment. Heat's Versa chimney hood and custom hood liner, does just that! Its 32" hood depth is the largest in the industry, and provides an extraordinary capture area for proper air flow. Manufactured with heavy gauge, 304 stainless steel, Heat's Versa hoods offer large commercial-style baffle filters; 50-watt halogen lights; and powerful 3-speed internal blowers, delivering up to 1250 CFM through 1 1/2" round ducts.

- Generously proportioned 32" depth of hood provides an exceptional capture area
- Available in 36", 42" or 48" wide
- Heavy gauge, 304 grade stainless steel with #4 Brush finish to match virtually every grill's brushed finish
- Large commercial-style baffle filters of 304 grade stainless steel
- Dimmable 50-watt halogen lights with bulbs supplied with the Versa Hood
- High heat switches for long life over grills
- Powerful, 3-speed internal blowers deliver up to 1250 CFM through 1 1/2" round duct; no plastic blower components
- Matching telescoping duct cover for 8' to 10' ceiling heights comes standard in the Versa hood carton; optional duct cover extension available for up to a 12' ceiling
- Sturdy, heavy gauge mounting brackets are pre-installed, making installation quick and easy
- Can be converted to rear discharge using standard sheet metal 90° elbow
- **Can be used as hood or custom insert**

Features

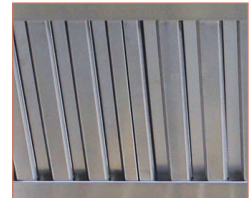
304 Grade Stainless Steel

Heavy gauge, 304 grade stainless steel with #4 Brush finish to match virtually every grill's brushed finish.



Commercial-Style Baffle Filters

Large commercial-style baffle filters of 304 grade stainless steel



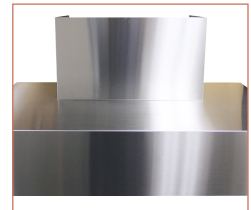
Dimmable Halogen Lights

Dimmable 50-watt halogen lights with bulbs supplied with the Versa hood



Matching Telescoping Duct Cover

Matching telescoping duct cover for 8' to 10' ceiling heights comes standard in the Versa hood carton.



Model	Description	Weight
AL-T7236-12	36" 304 SS Versa BBQ Hood , 32" Depth, 1250 CFM, Baffle Filter	99 lb.
AL-T7242-12	42" 304 SS Versa BBQ Hood , 32" Depth, 1250 CFM, Baffle Filter	109 lb.
AL-T7248-12	48" 304 SS Versa BBQ Hood , 32" Depth, 1250 CFM, Baffle Filter	119 lb.

Outdoor Kitchen Accessories

DCTEXT-12	12' Ceiling Duct Extension, 304 grade Stainless Steel	35 lb.
RC-10	Heavy Duty Roof Cap - Designed for High CFM Outdoor use	10 lb.



Heats line of outdoor kitchen storage components are constructed of commercial grade 304 stainless steel to withstand harsh outdoor elements and feature a rounded bevel design for added structural integrity. All doors are double-lined and accented with sleek curved handles. Storage drawers feature heavy duty sliding drawer mechanisms for smooth operation. Heat delivers convenient, durable storage for any outdoor kitchen space backed by a **lifetime warranty.***



17"W Double Drawer
HTX-DRAWER-2DR



17"W Triple Drawer
HTX-DRAWER-3DR



14"W X 20"H Vertical Door
HTX-DOOR-14X20V



20"W x 14"H
Horizontal Door
HTX-DOOR-14X20H



17"W X 24"H Vertical Door
HTX-DOOR-17X24V



24"W x 17"H
Horizontal Door
HTX-DOOR-17X24H



30"W Double Access Door with
Integrated Paper Towel Holder
HTX-32-DBLDOOR



36"W Double Access Door with
Integrated Paper Towel Holder
HTX-40-DBLDOOR



30"W Door
Double Drawer Dry
Pantry
HTX-32-DRDWR



36"W Door
Triple Drawer
Dry Pantry
HTX-40-DRDWR



18" Roll-Out Trash
HTX-DRAWER-TRASH



Whether you need to protect your Heat purchase, add a few fun cooking accessories or create the ultimate outdoor kitchen, Heat offers a full range of accessories. All metal components are crafted from the same commercial grade 304 stainless steel to ensure years of outdoor use, and our heavy duty grill covers even come with a guarantee.



Assembled Grill Cart for
4-Burner Gas Grill
HTX-32-CART



Assembled Grill Cart for
5-Burner Gas Grill
HTX-40-CART



24k BTU Built-in
Double Side Burner
HTSB2-NG
HTSB2-LP



Waterproof Rotisserie for
4/5 Burner Grill
HTX-32-ROTIS
HTX-40-ROTIS



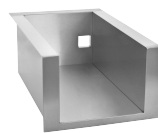
34 K BTU Built-In Professional
Power Burner
HTPB1-NG
HTPB1-LP



12k BTU Built-In
Single Side Burner
HTSB1-NG
HTSB1-LP



Paper Towel Dispenser
HTX-DRAWER-PTD



Insulated Jacket for
Double Side Burner
HTX-SB2-INJACKET



Insulated Jacket for
4-Burner Gas Grill
5-Burner Gas Grill
HTX-33-INJACKET
HTX-40-INJACKET



18" X 18"
Ice Bin
HTX-ICEBIN-18X18



15" X 24"
Sink
HTX-SINK-15X24



Optional Speed Rail
HTX-SPEEDRAIL

WARRANTY INFORMATION

All Heat Gas Grills are warranted for the lifetime of the original owner against defects in manufacturing and workmanship. This warranty covers the cooking grids, stainless housing and the stainless burners against rust-through.

Lifetime: Control valve, grill body, flame tamers, heat zone separators and cart

1 Year: All other components



For more information, please contact your  representative

Heat Outdoor Living

PO Box 16262

Philadelphia, PA 19114

866-876-9959 or CustomerService@heatoutdoorliving.com

Distributed by **Almo Premium Appliances.**

premium.almo.com



**Specifications are subject to change; not responsible for errors or omissions.*

PRHBR022018